



# GAT MONTHLY MEMBERSHIP PROGRESS REPORT

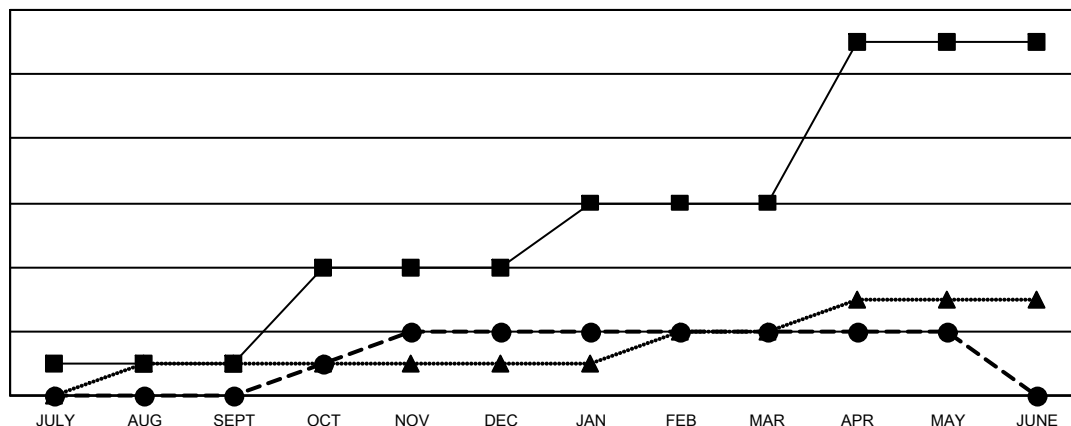
Results as of: 5/31/2022

Multiple District 105

LOCATION: ENGLAND

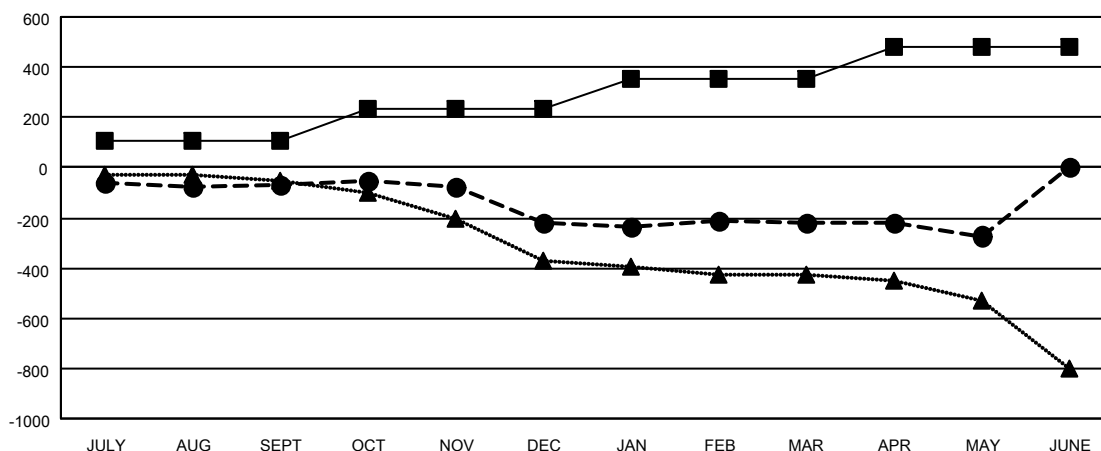
| Clubs                 |               |           |               | Members               |                        |                      |  |
|-----------------------|---------------|-----------|---------------|-----------------------|------------------------|----------------------|--|
| RESULTS FOR 2021-2022 |               |           |               | RESULTS FOR 2021-2022 |                        |                      |  |
| QUARTER               | NEW CLUB GOAL | NEW CLUBS | DROPPED CLUBS | QUARTER               | MEMBER GROWTH NET GOAL | MEMBER GROWTH ACTUAL | DROPPED MEMBERS ACTUAL (including transfers) |
| JULY/AUG/SEPT         | 1             | 0         | 6             | JULY/AUG/SEPT         | 104                    | 217                  | 248  |
| OCT/NOV/DEC           | 3             | 2         | 6             | OCT/NOV/DEC           | 129                    | 345                  | 449  |
| JAN/FEB/MAR           | 2             | 0         | 5             | JAN/FEB/MAR           | 122                    | 274                  | 237  |
| APR/MAY/JUNE          | 5             | 0         | 1             | APR/MAY/JUNE          | 127                    | 129                  | 171  |

GOALS AND ACTUAL NEW CLUBS CUMULATIVE



- - CURRENT YEAR GOALS FOR NEW CLUBS
- - CURRENT YEAR ACTUAL NEW CLUBS
- ▲ - LAST YEAR ACTUAL NEW CLUBS

GOALS AND ACTUAL MEMBERS CUMULATIVE



- - MEMBER GROWTH NET GOAL
- - MEMBER GROWTH ACTUAL
- ▲ - LAST YEAR MEMBERSHIP ACTUAL

DROPPED CLUBS: 18

313 CLUBS OF 595 ADDED 1 OR MORE NEW MEMBERS

## GENDER DISTRIBUTION

|                      |                |
|----------------------|----------------|
| MALE                 | 7,151 (70.59%) |
| FEMALE               | 2,979 (29.40%) |
| NON BINARY           | 1 (0.01%)      |
| PREFER NOT TO ANSWER | 0 (0.00%)      |

## DROPPED MEMBERS

|                |       |
|----------------|-------|
| DECEASED       | 150   |
| CLUB CANCELLED | 0     |
| OTHER          | 955   |
| TOTAL          | 1,105 |

[CLICK HERE FOR CUMULATIVE MEMBERSHIP DATA](#)

|                                 |       |
|---------------------------------|-------|
| TOTAL FAMILY UNIT MEMBERS       | 1,365 |
| FAMILY MEMBERS PAYING HALF DUES | 695   |